

July Swap  
Disappearing Nine Patch Quilt

Supplies:

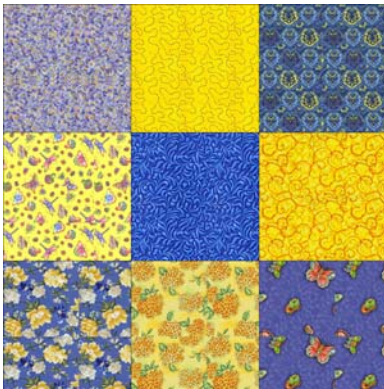
13 – 5 inch strips dark fabric width of fabric **OR** 100 – 5 inch squares dark (nickel charms)  
10 – 5 inch strips light fabric width of fabric **OR** 80 – 5 inch squares light (nickel charms)  
7/8 yard fabric for inner border  
1-3/8 yards for outer border

Cut:

Sub cut all 5 inch strips into 5 inch squares being careful to keep dark and light squares separate.  
7 – 3 inch strips width of fabric  
8 – 5 inch strips width of fabric

Assembly

Step 1: Making 9 patch



(Fig 1)

Arrange 5 dark and 4 light 5 inch squares in a nine patch pattern as shown in picture (Fig 1):

Sew squares together by rows then columns to create a 14 inch block.

Step 2: Unmaking 9 patch

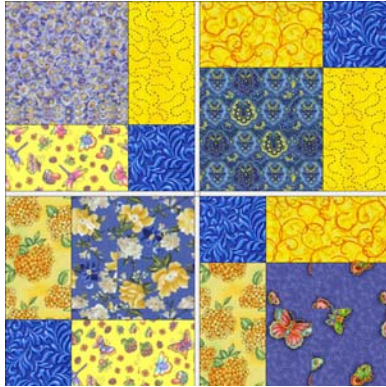


(Fig 2)

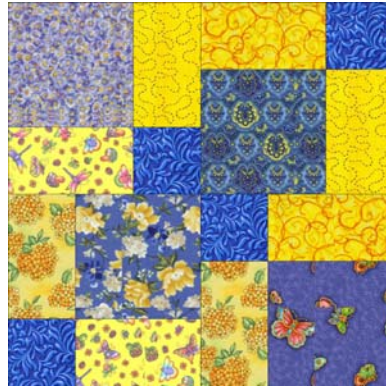
Cut block in half horizontally and vertically as shown (Fig 2)

Step 3: Nine patch disappears

Rearrange two of the diagonal squares by turning so that the uncut charm is in the center as shown in fig 3. Sew blocks together to create larger 13.5 inch block as in fig 4.



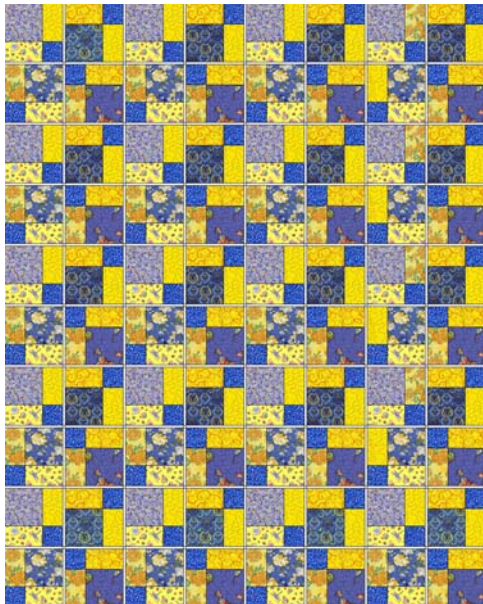
(Fig 3)



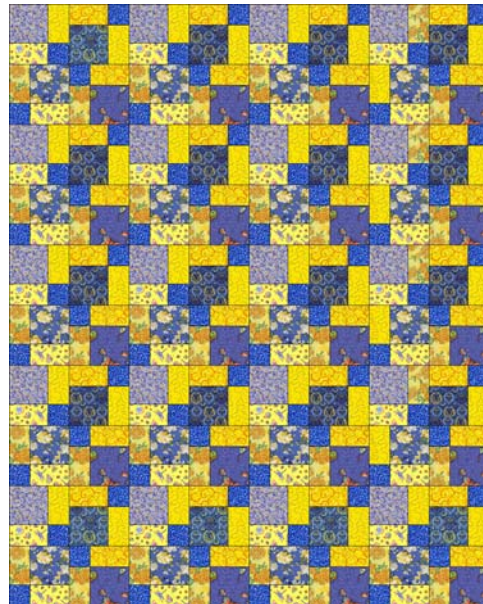
(Fig 4)

Step 4: Laying out large blocks

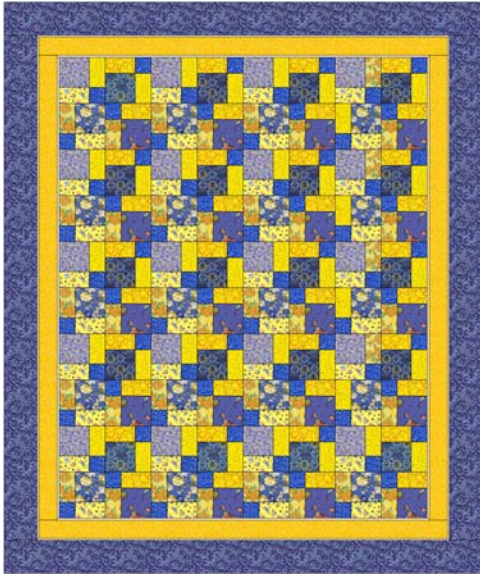
Arrange blocks as shown in fig 5:



Assemble row and columns Fig 6



Step 5: Add borders. Add small border, press seams toward border. Add large border, press seams toward border. See Fig 7.



Step 6; Completing Quilt

Sandwich quilt top, batting and backing. Quilt as desired and bind.